

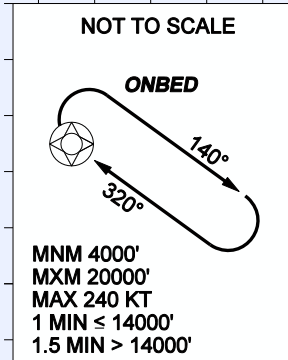
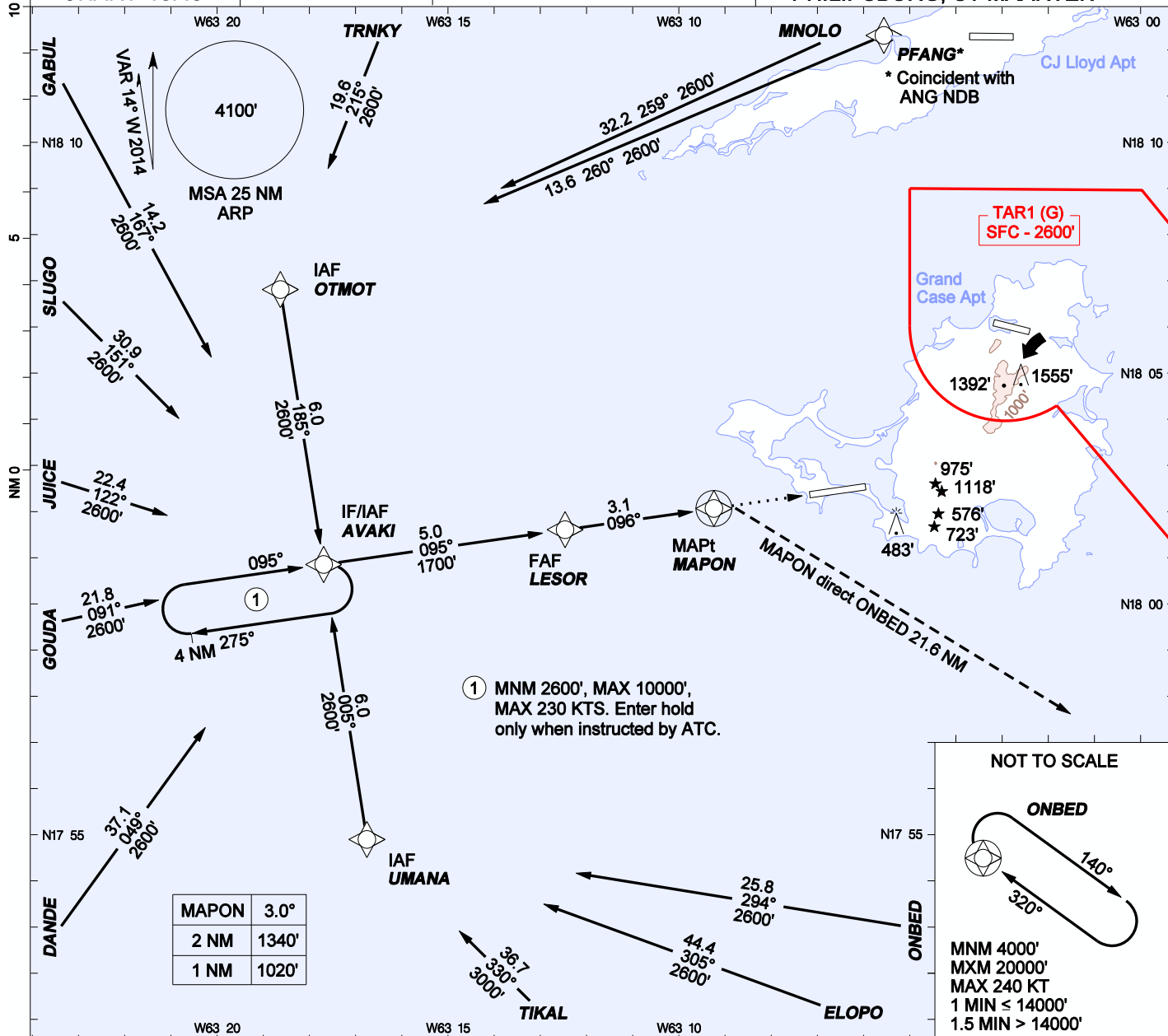
AIP DUTCH CARIBBEAN

**INSTRUMENT APPROACH CHART - ICAO**

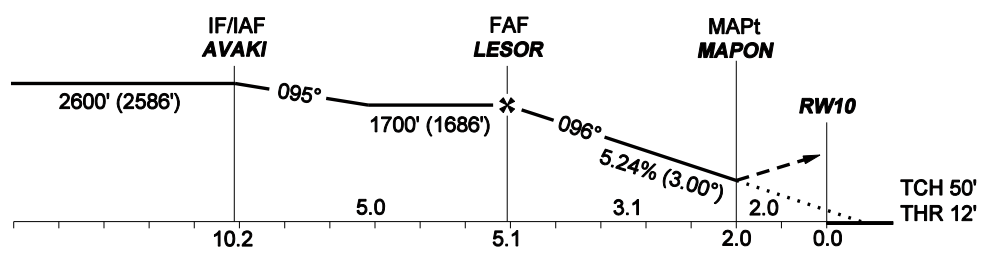
AD ELEVATION: 14'  
TRANS LEVEL: FL65  
TRANS ALT: 5000'

JULIANA:  
APPROACH 128.95 (PRIMARY), 118.7  
TOWER 118.7

**RNAV (GNSS) RWY 10  
PRINCESS JULIANA INT'L (TNCM)  
PHILIPSBURG, ST MAARTEN**



**MISSED APPROACH:** climbing right turn to 4000' direct ONBED and hold, or as directed by ATC. Maximum 205 KIAS until established direct ONBED if using 700' OCA.



OCA(H)	A	B	C	D	GROUNDSPEED - DESCENT RATE						
					KNOTS	70	90	100	120	140	160
LNAV (Note 1 below)	700' (686')	700' (686')	700' (686')	700' (686')	FT/MIN	372	478	531	637	743	849
LNAV	770' (756')	770' (756')	770' (756')	770' (756')							
CIRCLING											

1. Missed approach restricted to maximum 205 KIAS until established direct ONBED.
2. GNSS required. DME/DME not authorized.
3. Bearings are magnetic, altitudes and elevation in feet, heights are relative to AD elevation, distance in NM.

CHANGES: "OTMUT" changed to "OTMOT".